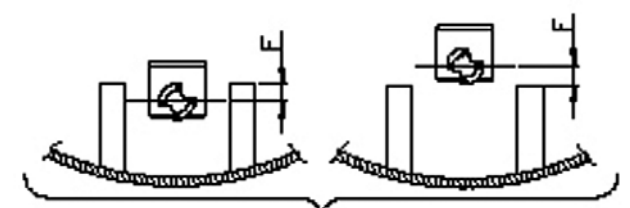
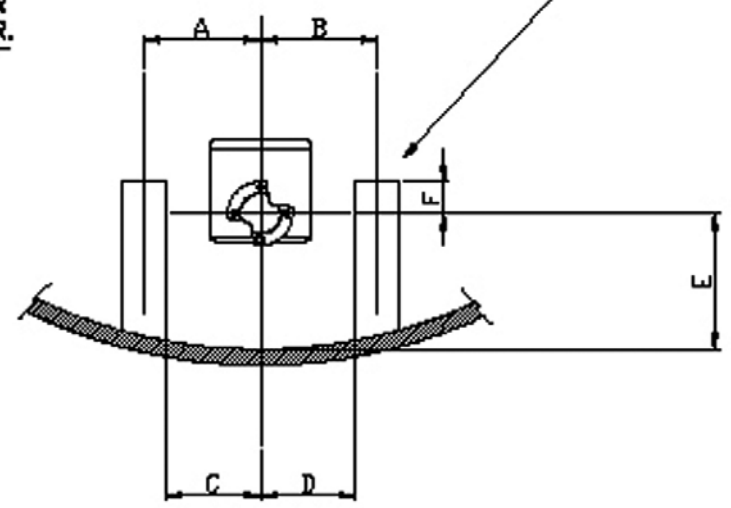
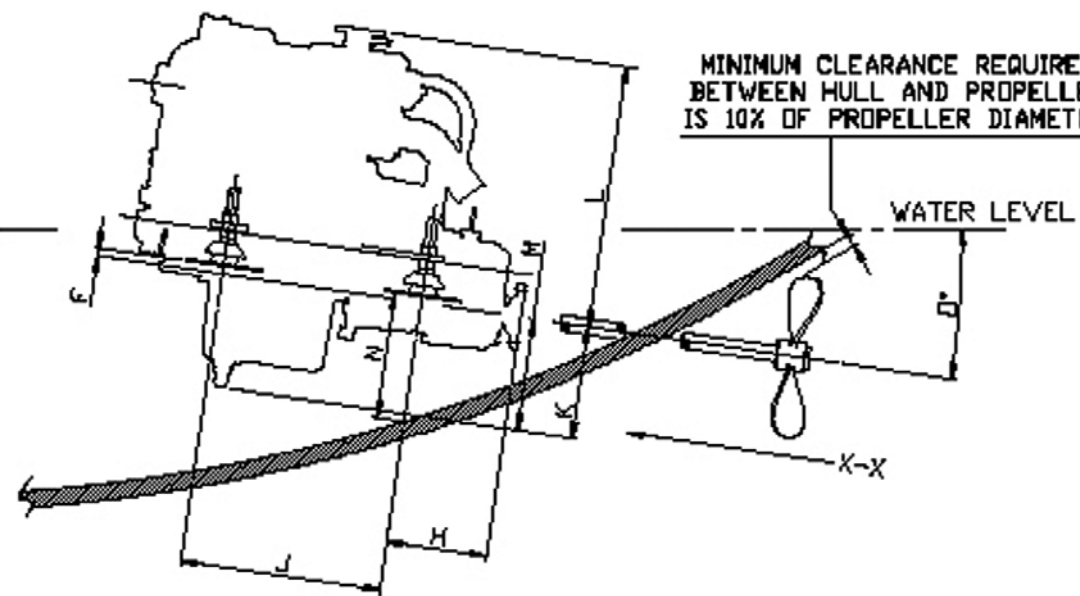


F= DROP OR RISE



MINIMUM CLEARANCE REQUIRED BETWEEN HULL AND PROPELLER IS 10% OF PROPELLER DIAMETER.



VIEW ON ARROW X-X

DIM	DETAIL	MM	DIM	DETAIL	MM
A	SHAFT \varnothing TO \varnothing OF BEARER (PORT)		H	GEARBOX FLANGE TO REAR FOOT	
B	SHAFT \varnothing TO \varnothing OF BEARER (STBD)		J	DISTANCE BETWEEN FEET	
C	SHAFT \varnothing TO INNER FACE OF BEARER (PORT)		K	\varnothing SHAFT TO BOTTOM OF SUMP	
D	SHAFT \varnothing TO INNER FACE OF BEARER (STBD)		L	\varnothing SHAFT TO TOP OF ENGINE	
E	HULL TO \varnothing SHAFT AT GEARBOX FACE		M	HULL TO \varnothing SHAFT	
F	SHAFT \varnothing TO BEARER (FILL IN APPROPRIATE BOX)	DROP	N	HULL TO BED AT REAR FOOT	
		RISE	O	ANGLE OF ENGINE	

REV	DESCRIPTION	DATE	APP'D	DRAWN	NOTES
01	DESIGN ON CAD	05/04/00	LT	ZPC	
02	ADDED WATER ANGLE	08/08/04	AW	TV	
03	ADDED NEW TITLE AND DROP/RISE DETAILS	13/08/04	AW	TV	

TITLE
RE-INSTALLATION FORM

DIMENSIONS IN MM (INCH)
DO NOT SCALE

BETA MARINE
TEL: (01453) 835282 FAX: (01453) 835284

BETA MARINE LTD.
HEBBETS HILL,
BATH ROAD,
SOUTH WOODCHESTER,
STROUD, GLOS. GL9 3DU

DRAWN BY: TW
CHECKED BY: LT

SIZE A4
SCALE NTS

DWG NO. SK081096
PAGE 1 of 1
DATE 05/04/00
REV 03